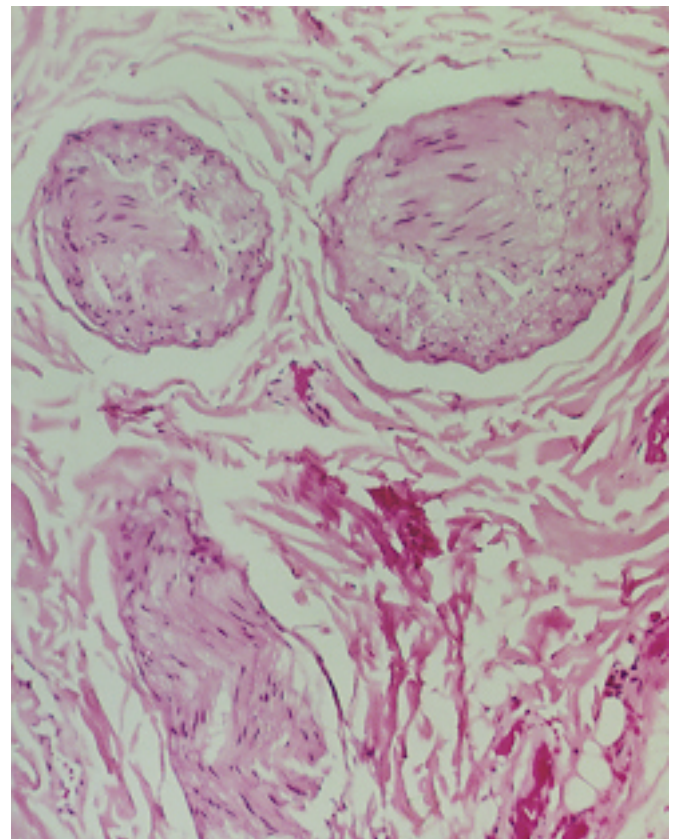


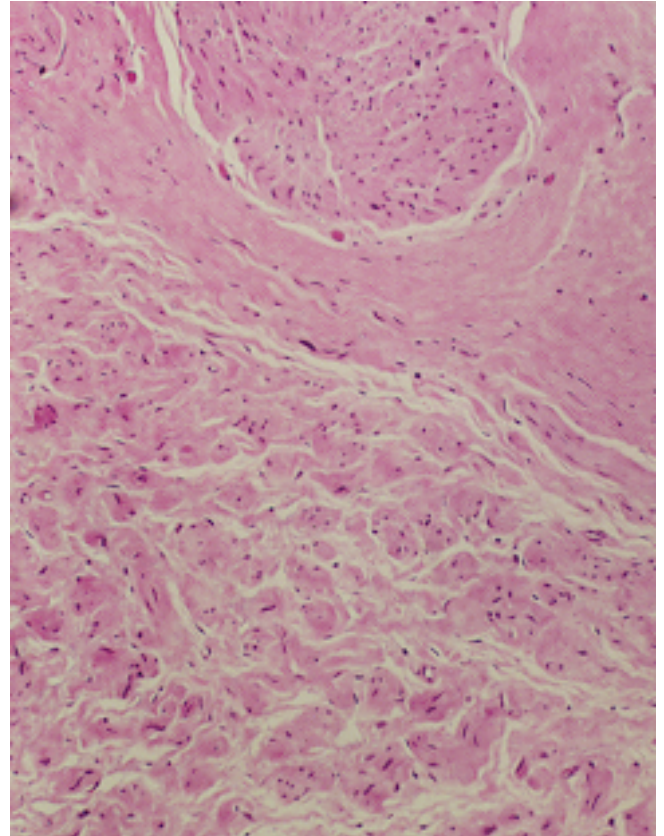
## TRAUMATIC NEUROMA

When a peripheral nerve is traumatized or cut, and the ends not accurately approximated, axons growing out of the proximal end may form a tangled mass of nerve fibers and fibrous tissue (Schwann cells and fibroblasts). These growths unlike the neurilemmoma (Schwannoma) have no capsule and lack Antoni A and B areas and Verocay bodies. Nuclei are comma shaped or wavy (Schwann cells) and the matrix is densely collagenous to myxoid.

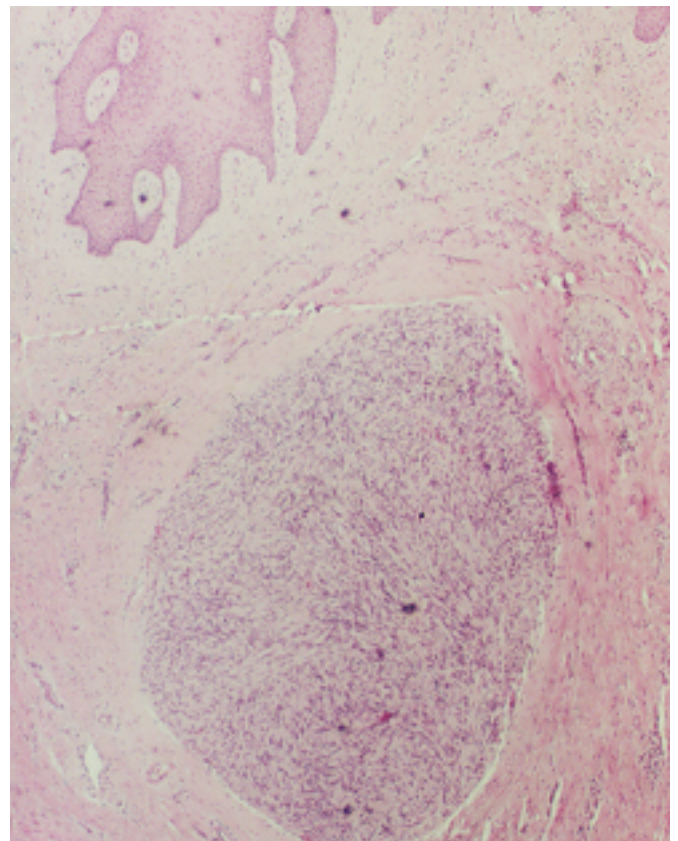
Neuroma. Three discrete nerve fiber bundles are seen in cross section and longitudinal section embedded in fibrous tissue.

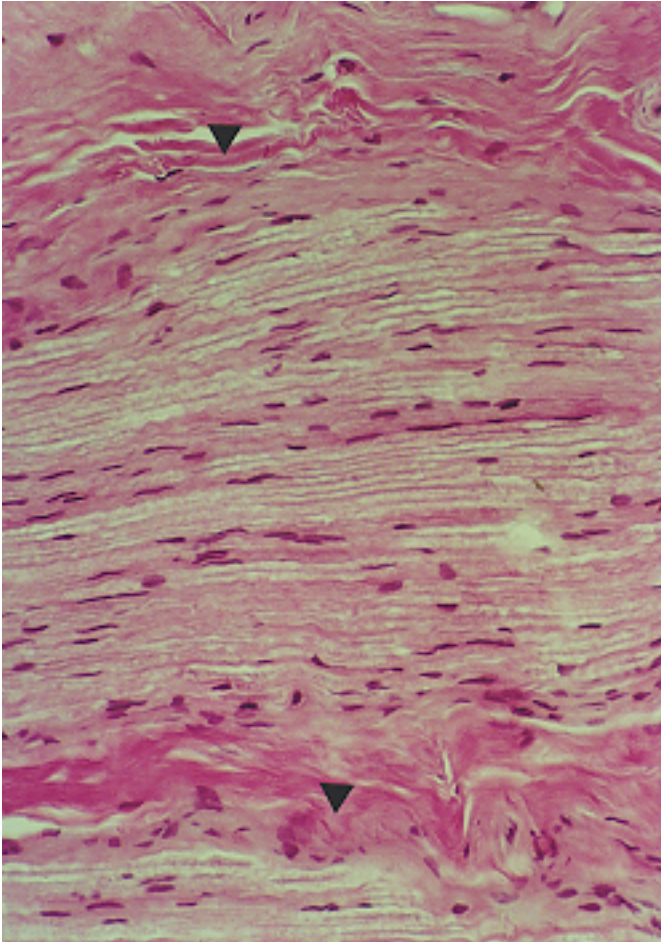


Neuroma. Note the microfascicles of proliferating nerve fibers in the lower half of the photo.



Neuroma, palisaded, encapsulated type.





Nerve abnormally encased in heavy fibrous tissue (triangles), not a neuroma. This is an example of perineural fibrosis.