

THE OHIO STATE UNIVERSITY HIPAA HYBRID ENTITY

COVERED FUNCTION

When performed by the units below, receiving, creating, or maintaining individually identifiable health information for the purposes of

1. treatment,
2. payment for health services, or
3. administrative healthcare operations (business, financial, legal, etc.) falls under the covered component of Ohio State's hybrid entity.

Health care units

DENTISTRY
MEDICAL CENTER
NISONGER
OPTOMETRY
OSU HEALTH PLAN
OSU PHYSICIANS, INC.
WILCE STUDENT HEALTH CENTER

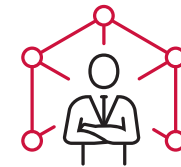
Service units

1. College of Medicine
2. College of Nursing
3. College of Pharmacy
4. Office of Administration and Planning
5. Office of Business and Finance
 - A. University Risk Management
 - B. Department of Internal Audit
6. Office of Technology and Digital Innovation
7. Office of Human Resources
8. Office of Institutional Equity
9. Office of Legal Affairs
10. Office of University Compliance and Integrity
11. Technology Commercialization Office
12. University Office of Advancement

NON-COVERED FUNCTION



Activities performed by all other colleges and units



Activities performed by the units listed at left that are not related to treatment, payment, or administrative healthcare operations

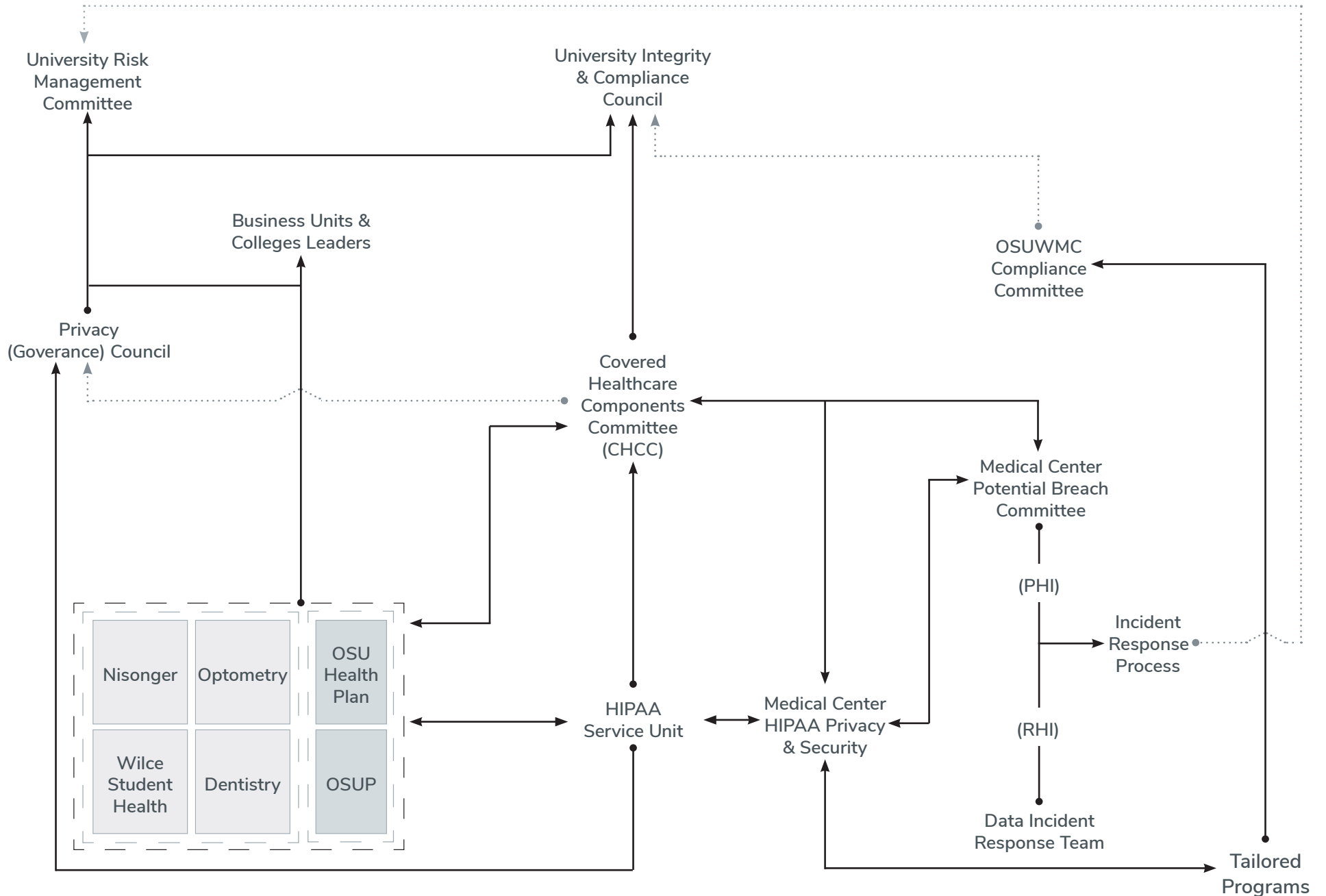


Research
(Data may be subject to HIPAA)



THE OHIO STATE UNIVERSITY

THE OHIO STATE UNIVERSITY HIPAA PRIVACY & SECURITY OVERSIGHT



*OSU Designated Healthcare Components (HIPAA Privacy & Security Officers)