



**THE OHIO STATE
UNIVERSITY**

WEXNER MEDICAL CENTER

UNDERSTANDING THE DISEASE SYMPOSIUM
Saturday, April 30, 2022

Phone & Computer Access

Presenter: Liz Gauen, Rehabilitation Engineer, ATP
OSU Assistive Technology Center

Some PD symptoms can make using a phone or computer difficult

- Tremor
- Stiffness & rigidity
- Slow movements
- Trouble with coordination
- Cognitive changes



Assistive Technology can help:

- Ergonomics
- Built-In accessibility settings
- External hardware and software
- Apps and features

Poll Question



**There is no “one-size-fits-all”
solution – every person is
unique and has unique needs!**



Ergonomics

“Applied science concerned with designing and arranging things people use so that the people and things interact most efficiently and safely”

www.merriam-webster.com

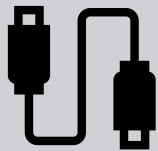
For Example:

- Arranging a workstation to maximize stability and support to arms
- Use of rolling table or wheelchair tray to position devices for best access and visibility

Built-In Accessibility Settings



Computers and phones have a variety of built-in settings that can make a device easier to use



Settings may vary from one device to another, depending on the brand, age and type of device you're using

Cursor & pointer

Make pointer, cursor, and touch feedback easier to see

Change pointer size and color

Change pointer size



Change pointer color



Suggested pointer colors



Pick a custom pointer color

Make the cursor easier to see when typing

Change cursor thickness



Computer Accessibility Examples: Mouse & Cursor

- Decrease the mouse speed to make it easier to control
- Increase the double-click speed to avoid accidental mis-hits
- Use 'click-lock' instead of drag & drop
- Increase the cursor size and color to make it easier to see


Keyboard

Make it easier to type and use keyboard shortcuts.

Use your device without a physical keyboard

Use the On-Screen Keyboard

Off

Press the Windows logo key  + Ctrl + O to turn the On-Screen Keyboard on or off.

Use Sticky Keys

Press one key at a time for keyboard shortcuts

Off

Allow the shortcut key to start Sticky Keys

Press the Shift key five times to turn Sticky Keys on or off.

Use Toggle Keys

Play a sound whenever you press Caps Lock, Num Lock, or Scroll Lock

Off

Allow the shortcut key to start Toggle Keys

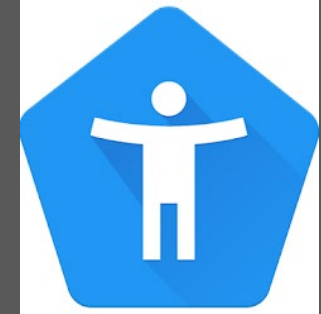
Press and hold the Num Lock key for five seconds to turn Toggle Keys on or off.

Computer Accessibility Examples: Keyboard

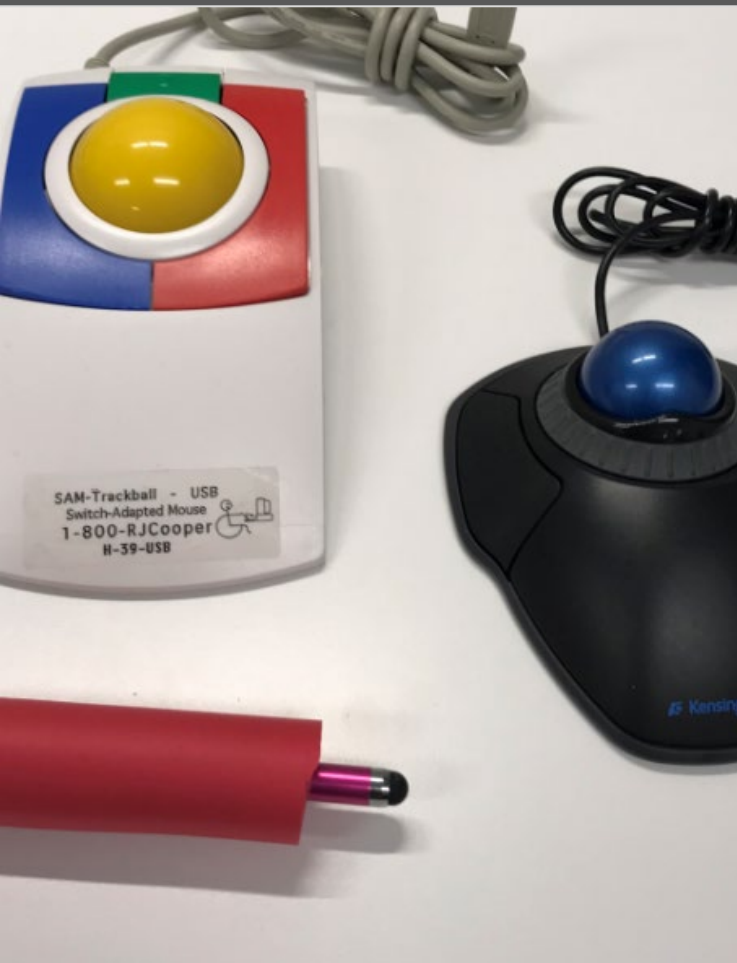
- Auto-correct or auto-complete to decrease the amount of typing you need to do
- Filter Keys to ignore repeated key hits
- Sticky Keys for hitting multiple keys at once
- Built-In Speech-to-Text to turn your speaking voice into text on the computer

Phone Accessibility - Examples

- Increase text size, high contrast to make screen easier to see
- Decrease screen sensitivity to reduce mis-hits
- Speech-to-Text or Voice Control



External Hardware: Mouse



- Trackball mouse
- Stylus
- Keypad mouse
- Ergonomic mouse
- Switch control
- Mouse-Steadying Software

External Hardware: Keyboard



- Low force keyboard
- Large key keyboard
- Key guard
- On-Screen Keyboard

Phone Apps & Features

- Reminders
 - *Medication schedule, daily routines, automations*
- Lists
 - *Shopping lists, medication lists, questions for doctor*
- Lifestyle apps
 - *Meditation, exercise, cognitive games, social networks, health tracking*

Assistive Technology Center

OSU Assistive Technology Assessment

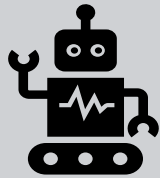
- Appointment with an Occupational Therapist and Rehabilitation Engineer to assess for access to electronic devices
- Need a referral from your physician for “Occupational Therapy EADL/Assistive Technology Assessment”

Resources



Apple Accessibility:

<https://www.apple.com/accessibility/>



Android Accessibility:

<https://www.android.com/accessibility/>



Windows Accessibility:

<https://www.microsoft.com/en-us/accessibility/windows>

Thank you!

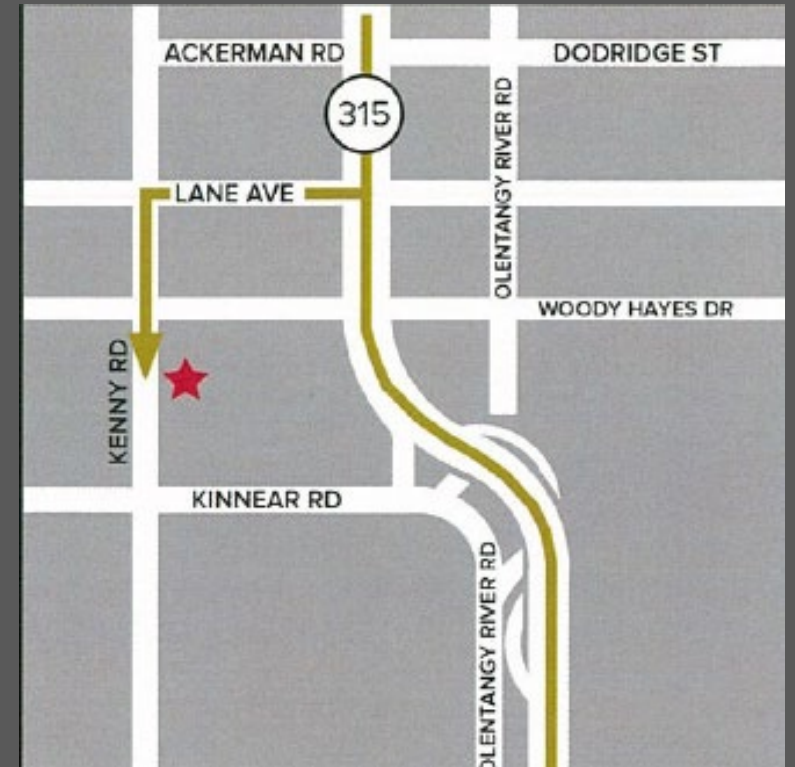
elizabeth.gauen@osumc.edu



Ask your doctor, PT, OT, or SLP for a referral to the OSUWMC Smart Clinic!

Getting Started Is Simple

- Ask your physician for a referral to Occupational Therapy/ATP for “EADL Assessment” through the Ohio State Wexner Medical Center’s Assistive Technology Center Smart Clinic. This referral should be completed and faxed to **614-293-9002** by your physician. Referral must include all diagnoses, demographics, insurance card and most recent office notes.



We are located in the Assistive Technology Center on the 3rd floor of Martha Morehouse.